

APPENDIX M: SOCIOCULTURAL DATA REPORT

Sociocultural Data Report: SR 7

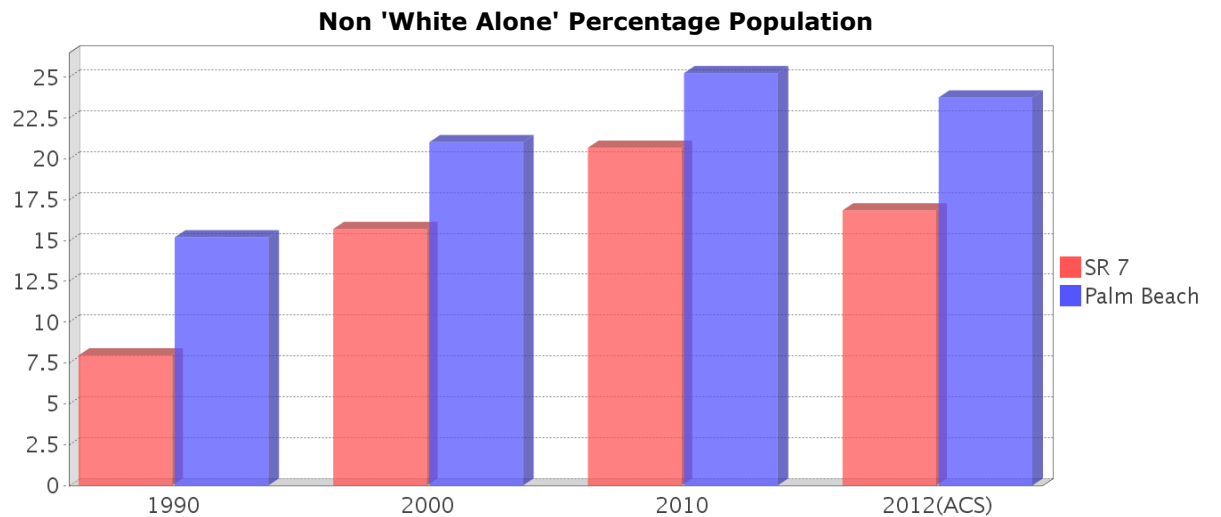
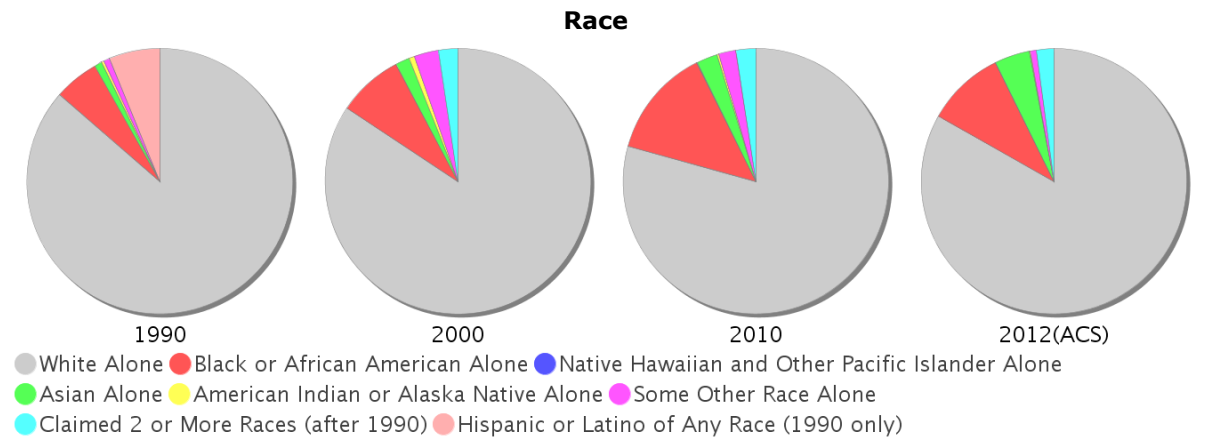
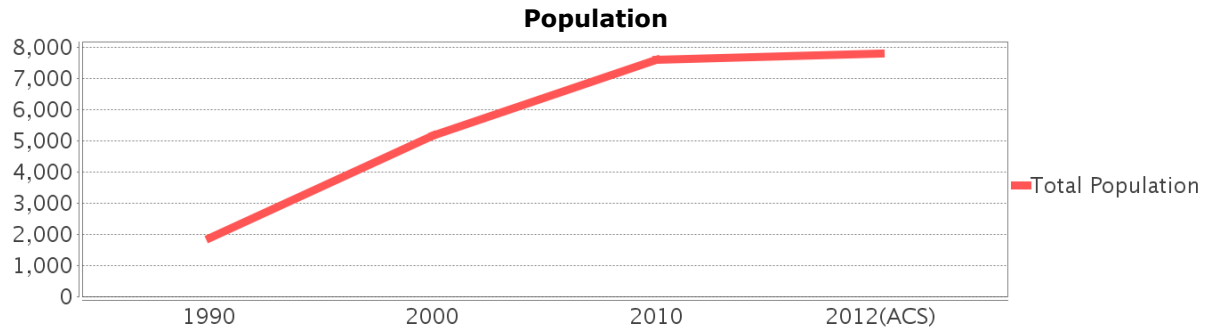
Area: 9.135 square miles
Jurisdiction(s): **Cities:** Palm Beach Gardens, Royal Palm Beach, West Palm Beach
Counties: Palm Beach

General Population Trends

Description	1990	2000	2010	2012(ACS)
Total Population	1,882	5,176	7,582	7,791
Total Households	642	1,711	2,966	3,004
Average Persons per Acre	1.36	2.07	3.58	3.59
Average Persons per Household	2.91	2.80	2.92	2.58
Average Persons per Family	3.11	3.13	3.00	3.01
Males	935	2,619	3,689	3,779
Females	947	2,557	3,893	4,012

Race and Ethnicity Trends

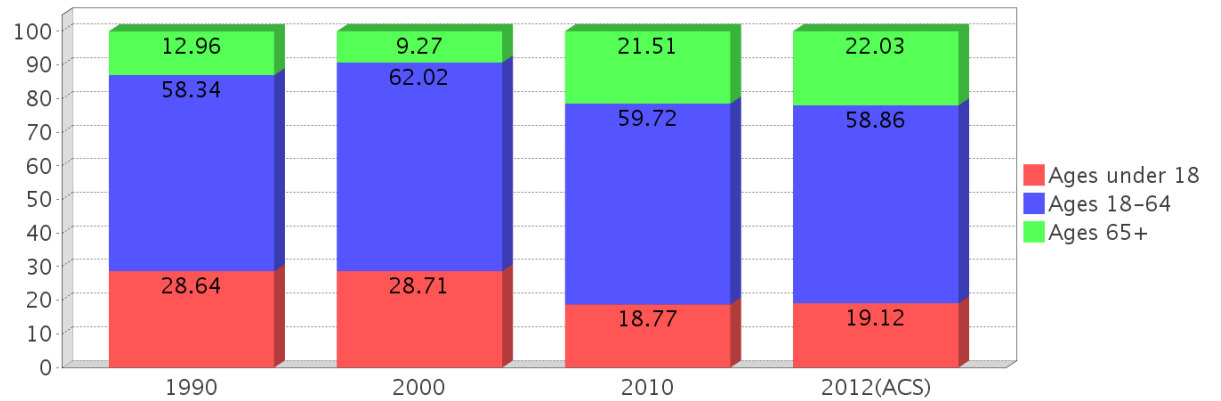
Description	1990	2000	2010	2012(ACS)
White Alone	1,732 (92.03%)	4,363 (84.29%)	6,013 (79.31%)	6,478 (83.15%)
Black or African American Alone	109 (5.79%)	415 (8.02%)	1,013 (13.36%)	747 (9.59%)
Native Hawaiian and Other Pacific Islander Alone	0 (0.00%)	0 (0.00%)	3 (0.04%)	1 (0.01%)
Asian Alone	19 (1.01%)	87 (1.68%)	195 (2.57%)	335 (4.30%)
American Indian or Alaska Native Alone	5 (0.27%)	34 (0.66%)	14 (0.18%)	8 (0.10%)
Some Other Race Alone	16 (0.85%)	154 (2.98%)	163 (2.15%)	55 (0.71%)
Claimed 2 or More Races	NA (NA)	124 (2.40%)	182 (2.40%)	167 (2.14%)
Hispanic or Latino of Any Race	124 (6.59%)	567 (10.95%)	1,120 (14.77%)	891 (11.44%)
Not Hispanic or Latino	1,758 (93.41%)	4,609 (89.05%)	6,462 (85.23%)	6,900 (88.56%)
Non White Alone	150 (7.97%)	813 (15.71%)	1,569 (20.69%)	1,313 (16.85%)



Age Trends

Description	1990	2000	2010	2012(ACS)
Under Age 5	8.87%	5.91%	4.17%	3.57%
Ages 5-17	19.77%	22.80%	14.60%	15.56%
Ages 18-21	3.29%	4.21%	3.84%	4.61%
Ages 22-29	10.63%	6.74%	6.96%	6.40%
Ages 30-39	22.58%	18.08%	9.69%	9.95%
Ages 40-49	12.33%	18.57%	13.74%	10.99%
Ages 50-64	9.51%	14.41%	25.48%	26.92%
Age 65 and Over	12.96%	9.27%	21.51%	22.03%
-Ages 65-74	7.97%	6.12%	14.73%	16.33%
-Ages 75-84	4.36%	2.59%	5.33%	4.70%
-Age 85 and Over	0.64%	0.56%	1.46%	1.00%
Median Age	NA	37	40	41

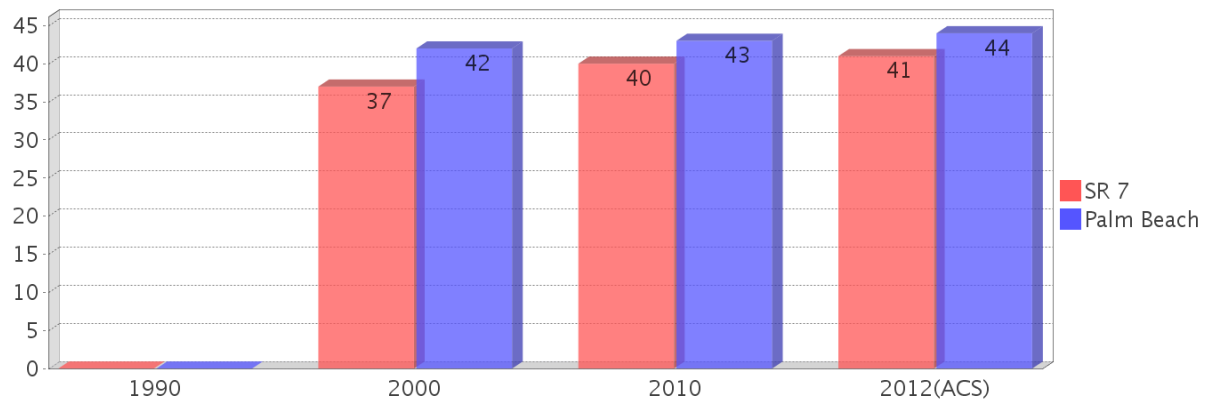
Population by Age Group



Income Trends

Description	1990	2000	2010	2012(ACS)
Median Household Income	\$44,441	\$63,836	\$67,626	\$80,234
Median Family Income	\$45,089	\$67,094	\$76,508	\$86,402
Population below Poverty Level	2.82%	3.63%	7.83%	8.50%
Households below Poverty Level	3.74%	3.57%	5.80%	5.79%
Households with Public Assistance Income	1.71%	0.88%	0.34%	0.20%

Median Age Comparison

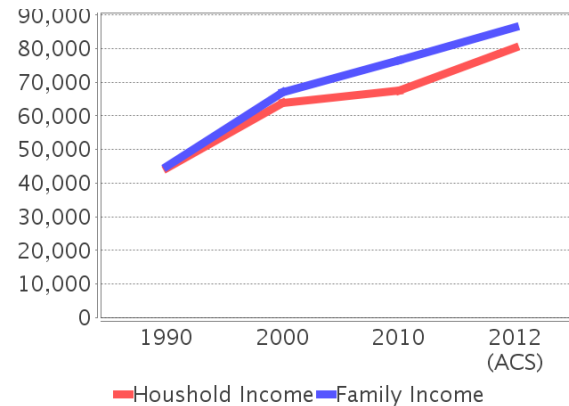


Disability Trends

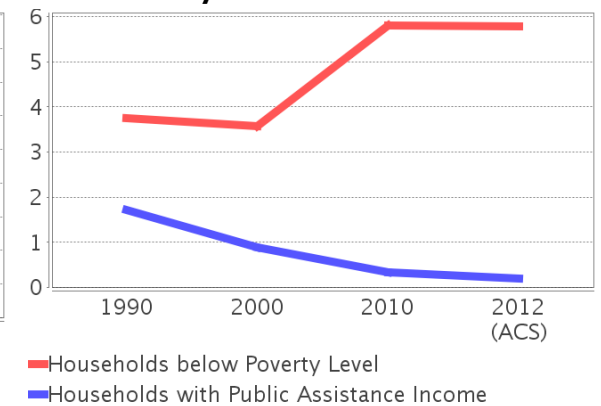
Age 16 to 64

Description	1990	2000	2010	2012(ACS)
Population 16 To 64 Years with a disability	51 (3.76%)	480 (10.05%)	(NA)	385 (8.15%)

Income Trends



Poverty and Public Assistance



Educational Attainment Trends

Age 25 and Over

Description	1990	2000	2010	2012(ACS)
Less than 9th Grade	48 (3.88%)	74 (2.21%)	192 (3.46%)	160 (2.78%)
9th to 12th Grade, No Diploma	143 (11.55%)	300 (8.96%)	283 (5.10%)	250 (4.35%)
High School Graduate or Higher	1,047 (84.57%)	2,976 (88.84%)	5,074 (91.44%)	5,338 (92.87%)
Bachelor's Degree or Higher	223 (18.01%)	741 (22.12%)	2,001 (36.06%)	2,291 (39.86%)

Language Trends

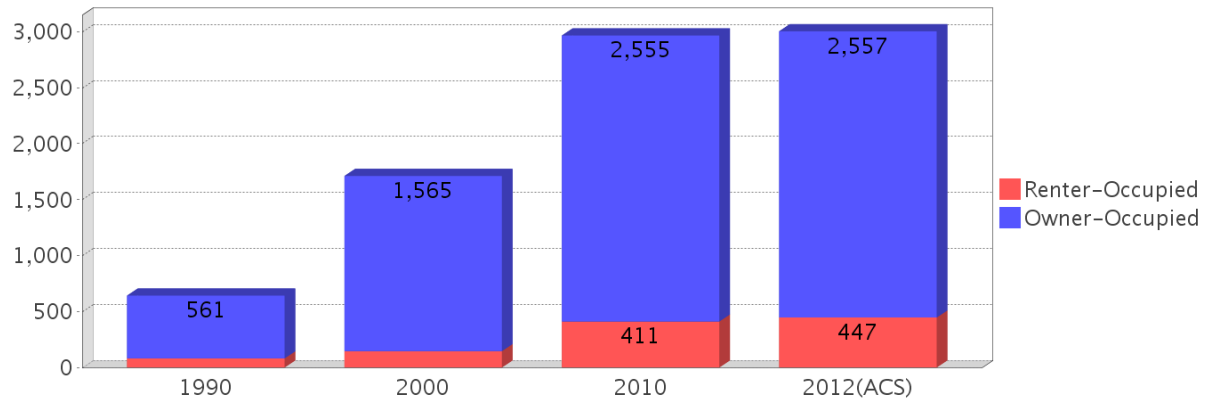
Age 5 and Over

Description	1990	2000	2010	2012(ACS)
Speaks English Well	30 (1.74%)	143 (2.94%)	229 (3.20%)	273 (3.63%)
Speaks English Not Well	NA (NA)	56 (1.15%)	103 (1.44%)	143 (1.90%)
Speaks English Not at All	NA (NA)	16 (0.33%)	56 (0.78%)	38 (0.51%)
Speaks English Not Well or Not at All	20 (1.16%)	72 (1.48%)	159 (2.22%)	181 (2.41%)

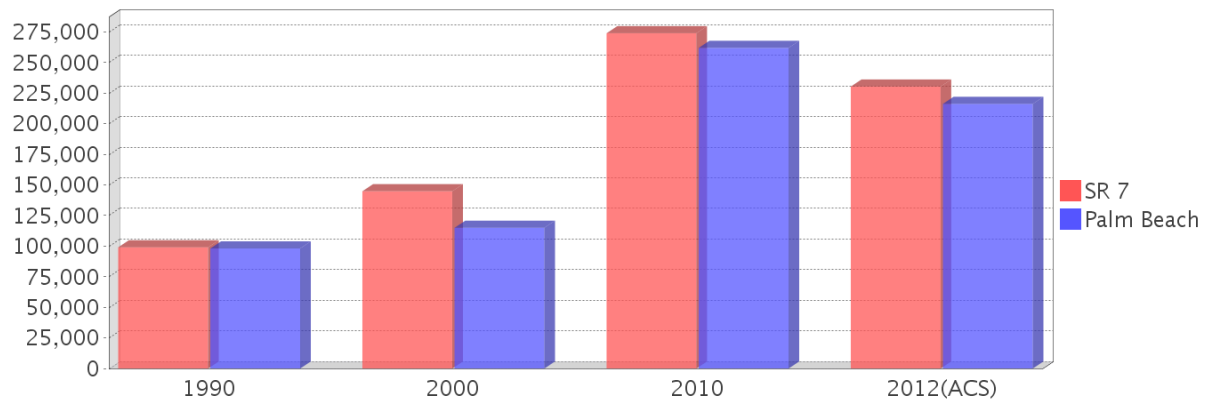
Housing Trends

Description	1990	2000	2010	2012(ACS)
Total	745	1,860	3,484	3,582
Units per Acre	0.11	0.28	0.58	0.60
Single-Family Units	533	1,691	3,119	3,149
Multi-Family Units	94	166	382	425
Mobile Home Units	10	3	19	8
Owner-Occupied Units	561	1,565	2,555	2,557
Renter-Occupied Units	81	146	411	447
Vacant Units	103	150	518	579
Median Housing Value	\$99,000	\$144,800	\$273,900	\$230,350
Occupied Housing Units w/No Vehicle	14 (2.18%)	43 (2.51%)	83 (2.80%)	65 (2.16%)

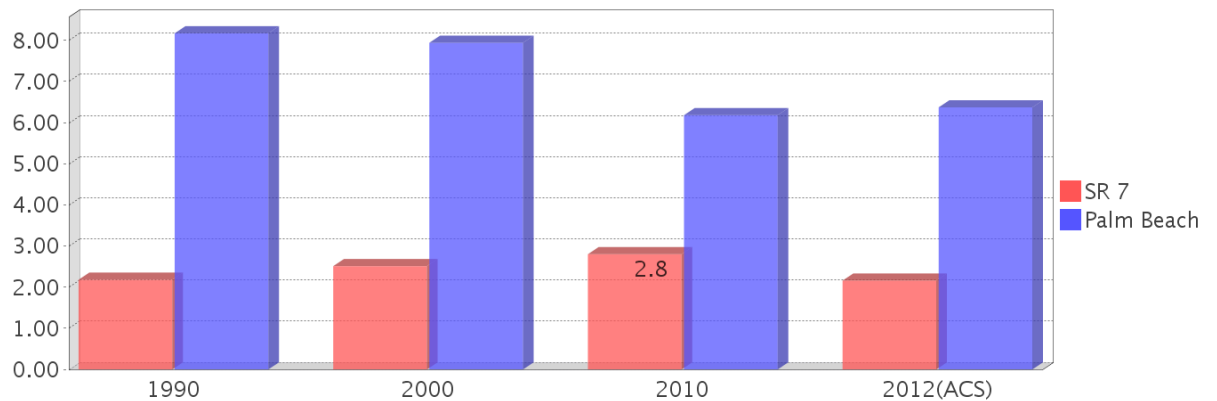
Housing Tenure



Median Housing Value Comparison

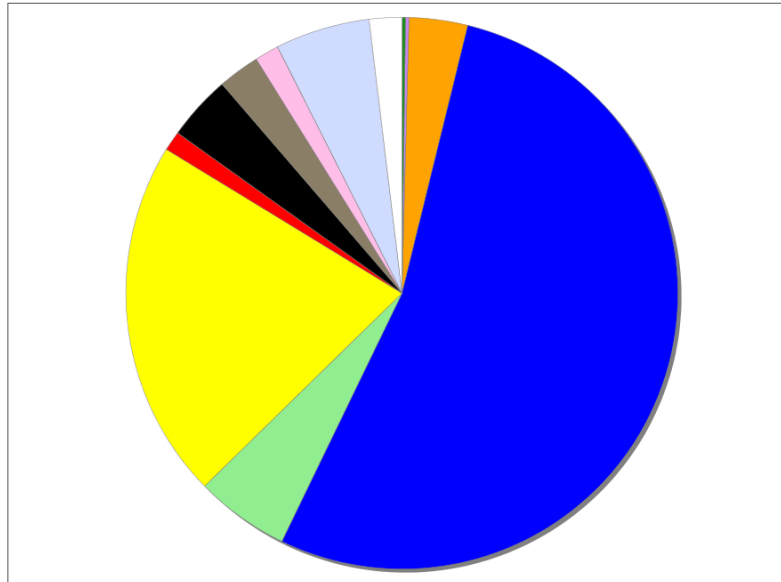


Occupied Units With No Vehicles Available



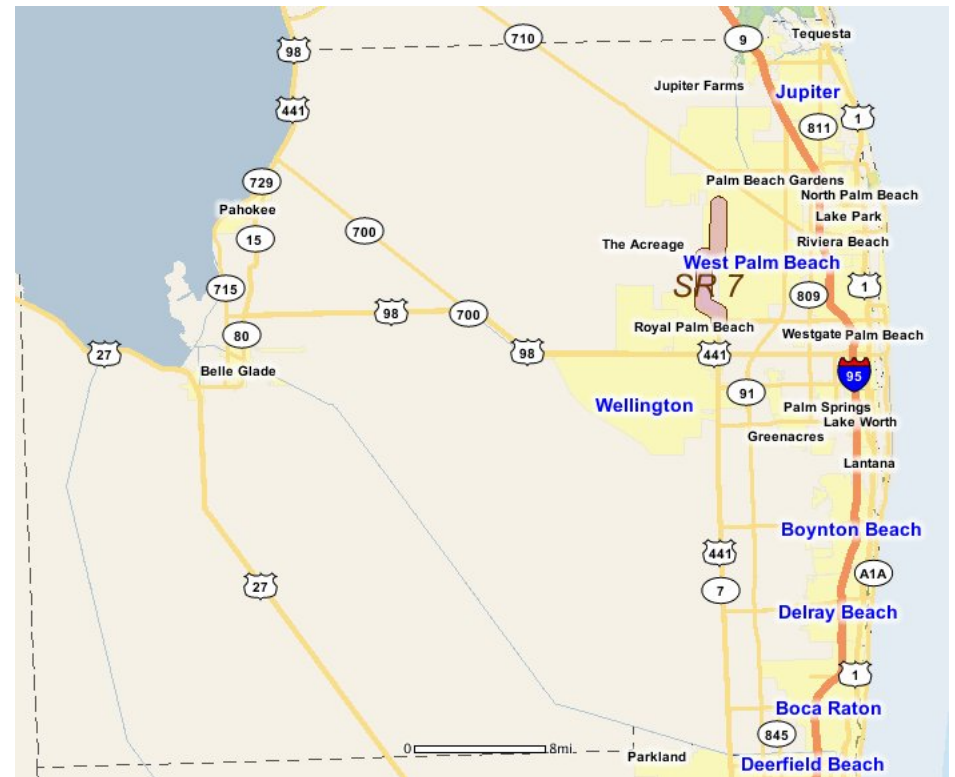
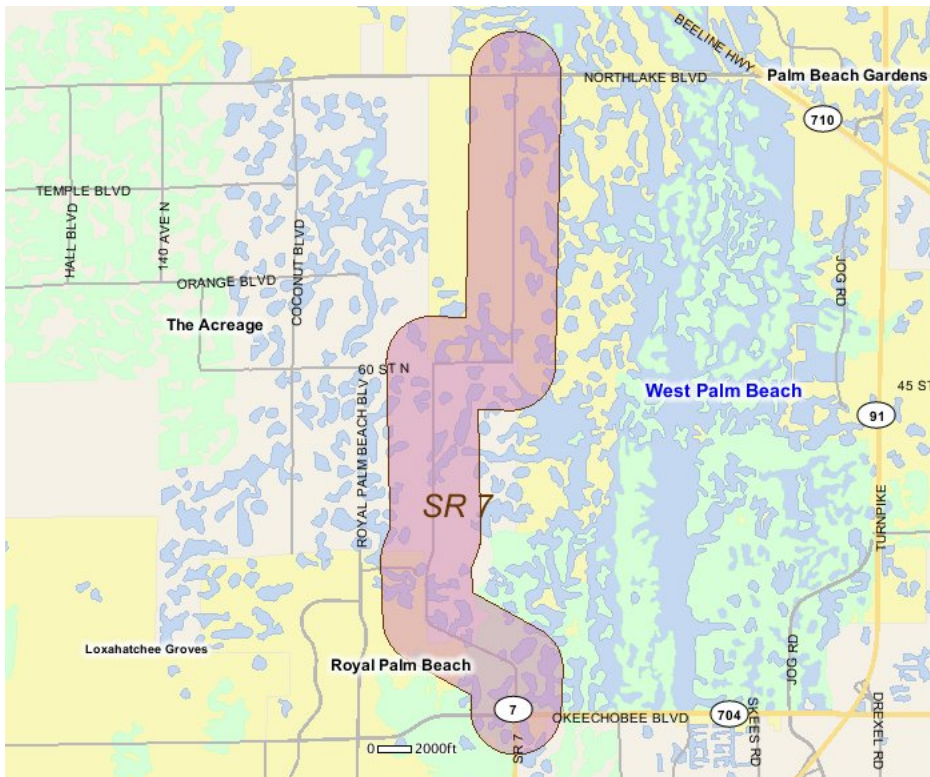
Existing Land Use

Land Use Type	Acres	Percentage
Acreage Not Zoned For Agriculture	0	0.00%
Agricultural	12	0.21%
Centrally Assessed	0	0.00%
Industrial	10	0.17%
Institutional	0	0.00%
Mining	0	0.00%
Other	185	3.16%
Public/Semi-Public	2,880	49.26%
Recreation	296	5.06%
Residential	1,136	19.43%
Retail/Office	63	1.08%
Row	205	3.51%
Vacant Residential	133	2.27%
Vacant Nonresidential	77	1.32%
Water	297	5.08%
Parcels With No Values	104	1.78%



- Acreage Not Zoned For Agriculture
- Agricultural
- Centrally Assessed
- Industrial
- Institutional
- Mining
- Other
- Public/Semi-Public
- Recreation
- Residential
- Retail/Office
- Row
- Vacant Residential
- Vacant Nonresidential
- Water
- Parcels With No Values

Location Maps



Community Facilities

The community facilities information below is useful in a variety of ways for environmental evaluations. These community resources should be evaluated for potential sociocultural effects, such as accessibility and relocation potential. The facility types may indicate the types of population groups present in the project study area. Facility staff and leaders can be sources of community information such as who uses the facility and how it is used. Additionally, community facilities are potential public meeting venues.

Community Boundaries (User defined)

Facility Name

Palm Beach Gardens
The Acreage
Royal Palm Beach
West Palm Beach

FDOH Group Care Facilities

Facility Name	Address	Zip Code
ESSENCE OF HOME	388 LA MANCHA AVE	33411
MR & MRS LYNDON MITCHELL	266 LA MANCHA AVE	33411
DAROLYN LACAGNINA	114 SEGOVIA CT	33411
NATHANIEL & PRISCILLA HOLMES	10336 FOX TRAIL RD S	33411
FIRST CLASS CARE	154 CORDOBA CIR	33411
MALIK & CAROLYN HASAN	98 SANTA MONICA	33411
MC CHARLES & MARY ADDIE	154 VISCAYA AVE	33411
JUDY-ANN BLAKE	11033 63RD LN N	33412
MAGUELITA JEANTY	211 SALZEDO ST	33411
MARIE SAINTELUS	11160 50TH ST N	33411
TAWANDA DENISE MORRIS	225 LAS PALMAS ST	33411

Florida Parks and Recreational Facilities

Facility Name	Address	Zip Code
TODD ROBINER PARK	350 LA MANCHA AVE	33411

Social Services (Geocoded)

Facility Name	Address	Zip Code
INSTITUTE FOR WOMENS HEALTH SPECIALIST OF SOUTH FLORIDA PA	1395 NORTH STATE ROAD 7	33411

US Census Places

Facility Name

The Acreage
West Palm Beach
Palm Beach Gardens
Royal Palm Beach

Block Groups

The following Census Block Groups were used to calculate demographics for this report.

1990 Census Block Groups

120990078119, 120990078021, 120990079059, 120990078039, 120990078101

2000 Census Block Groups

120990078111, 120990078172, 120990078202, 120990078201, 120990078181, 120990078151, 120990078131, 120990079061

2010 Census Block Groups

120990078131, 120990078181, 120990078171, 120990078201, 120990079092, 120990078371, 120999801001, 120990078202, 120990079101, 120990078373, 120990078173, 120990078175

2011 Census Block Groups

120990078201, 120990078131, 120990078371, 120990078175, 120990078181, 120990078202, 120990079092, 120990078173, 120990078171, 120990079101, 120990078373, 120999801001

2012 Census Block Groups

120990078202, 120990078373, 120990078173, 120990078131, 120990079092, 120990078171, 120990078181, 120999801001, 120990078201, 120990078175, 120990079101, 120990078371

Data Sources

Area

The geographic area of the community based on a user-specified community boundary or area of interest (AOI) boundary.

Jurisdiction

Jurisdiction(s) includes local government boundaries that intersect the community or AOI boundary.

Demographic Data

Demographic data reported under the headings General Population Trends, Race and Ethnicity Trends, Age Trends, Income Trends, Educational Attainment Trends, Language Trends, and Housing Trends is from the U.S. Decennial Census (1990, 2000, and 2010) and the American Community Survey (ACS) 5-year estimates from 2006-2010 and 2008-2012. The data was gathered at the block group level for user-specified community boundaries and AOIs, and at the county level for counties. Depending on the dataset, the data represents 100% counts (Census Summary File 1) or sample-based information (Census Summary File 3 or ACS).

About the Census Data:

User-specified community boundaries and AOIs do not always correspond precisely to block group boundaries. In these instances, adjustment of the geographic area and data for affected block groups is required to estimate the actual population. To improve the accuracy of such estimates in the SDR report, the census block group data was adjusted to exclude all census blocks with a population of two or fewer. These areas were eliminated from the corresponding years' block groups. Next, the portion of the block group that lies outside of the community or AOI boundary was removed. The demographics within each block group were then recalculated, assuming an equal area distribution of the population. Note that there may be areas where there is no population.

Use caution when comparing the 100% count data (Decennial Census) to the sample-based data (ACS). In any given year, about one in 40 or 2.5% of U.S. households will receive the ACS questionnaire. Over any five-year period, about one in eight households will receive the questionnaire, as compared to about one in six that received the long form questionnaire for the Decennial Census 2000. (Source: <http://mcdc.missouri.edu/pub/data/acs/Readme.shtml>) The U.S. Census Bureau provides help with this process:

http://www.census.gov/acs/www/guidance_for_data_users/comparing_2012/

Use caution when interpreting changes in Race and Ethnicity over time. In the 2000 Decennial Census, respondents were given a new option of selecting one or more race categories. Also in 2000, information on Hispanic origin was collected independent of race. Because of these changes, the 2000 data and later datasets are not directly comparable with race related data from the 1990 or earlier censuses. (Source: <http://www.census.gov/prod/2001pubs/c2kbr01-1.pdf>)

Disability data is not included in the 2010 Decennial Census, or the 2006-2010 ACS. This data is available in the 2008-2012 ACS.

According to the US Census Bureau, disability variables should not be compared between 1990, 2000, or 2012 ACS data. Because of the changes to the questions, the new ACS disability questions should not be compared to the previous ACS disability data or the Census 2000 disability data. Furthermore, the 2000 disability questions changed significantly from the 1990 questions and data from these surveys also should not be compared.

Please take the following two concerns into account when viewing this data: 1) With the 1990 data the disabilities are listed as a "work disability" while this distinction is not made with 2000 or 2012 ACS data; 2) The 2012 ACS data includes the institutionalized population (e.g. persons in prisons and group homes), while this population is not included in 1990 or 2000.

The category Bachelor's Degree or Higher under the heading Educational Attainment Trends is a subset of the category High School Graduate or Higher.

Income of households. This includes the income of the householder and all other individuals 15 years old and over in the household, whether they are related to the householder or not. Because many households consist of only one person, average household income is usually less than average family income.

Income of families. In compiling statistics on family income, the incomes of all members 15 years old and over related to the householder are summed and treated as a single amount.

Age Trends median age for 1990 is not available.

Land Use Data

The Land Use information Indicates acreages and percentages for the generalized land use types used to group parcel-specific, existing land use assigned by the county property appraiser office according to the Florida Department of Revenue land use codes.

Community Facilities Data

- Assisted Rental Housing Units - Identifies multifamily rental developments that receive funding assistance under federal, state, and local government programs to offer affordable housing as reported by the Shimberg Center for Housing Studies, University of Florida.
- Mobile Home Parks - Identifies approved or acknowledged mobile home parks reported by the Florida Department of Business and Professional Regulation and Florida Department of Health.
- Migrant Camps - Identifies migrant labor camp facilities inspected by the Florida Department of Health.
- Group Care Facilities - Identifies group care facilities inspected by the Florida Department of Health.
- Community Center and Fraternal Association Facilities - Identifies facilities reported by multiple sources.
- Law Enforcement Correctional Facilities - Identifies facilities reported by multiple sources.
- Cultural Centers - Identifies cultural centers including organizations, buildings, or complexes that promote culture and arts (e.g., aquariums and zoological facilities; arboreta and botanical gardens; dinner theaters; drive-ins; historical places and services;

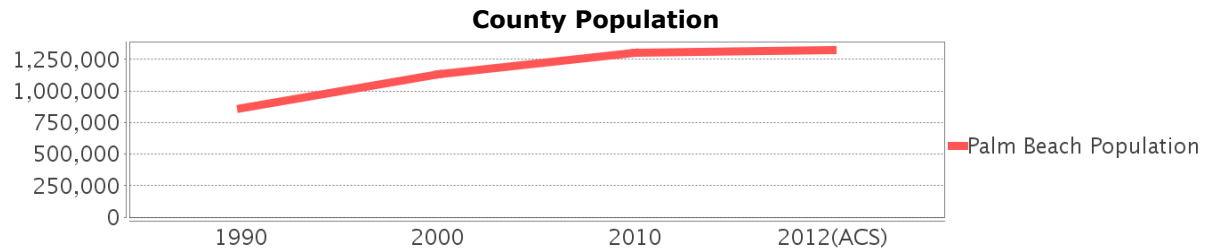
libraries; motion picture theaters; museums and art galleries; performing arts centers; performing arts theaters; planetariums; studios and art galleries; and theater producers stage facilities) reported by multiple sources.

- Fire Department and Rescue Station Facilities - Identifies facilities reported by multiple sources.
- Government Buildings - Identifies local, state, and federal government buildings reported by multiple sources.
- Health Care Facilities - Identifies health care facilities including abortion clinics, dialysis clinics, medical doctors, nursing homes, osteopaths, state laboratories/clinics, and surgicenters/walk-in clinics reported by the Florida Department of Health.
- Hospital Facilities - Identifies hospital facilities reported by multiple sources.
- Law Enforcement Facilities - Identifies law enforcement facilities reported by multiple sources.
- Parks and Recreational Facilities - Identifies parks and recreational facilities reported by multiple sources.
- Religious Center Facilities - Identifies religious centers including churches, temples, synagogues, mosques, chapels, centers, and other types of religious facilities reported by multiple sources.
- Private and Public Schools - Identifies private and public schools reported by multiple sources.
- Social Service Centers - Identifies social service centers reported by multiple sources.

Palm Beach County Demographic Profile

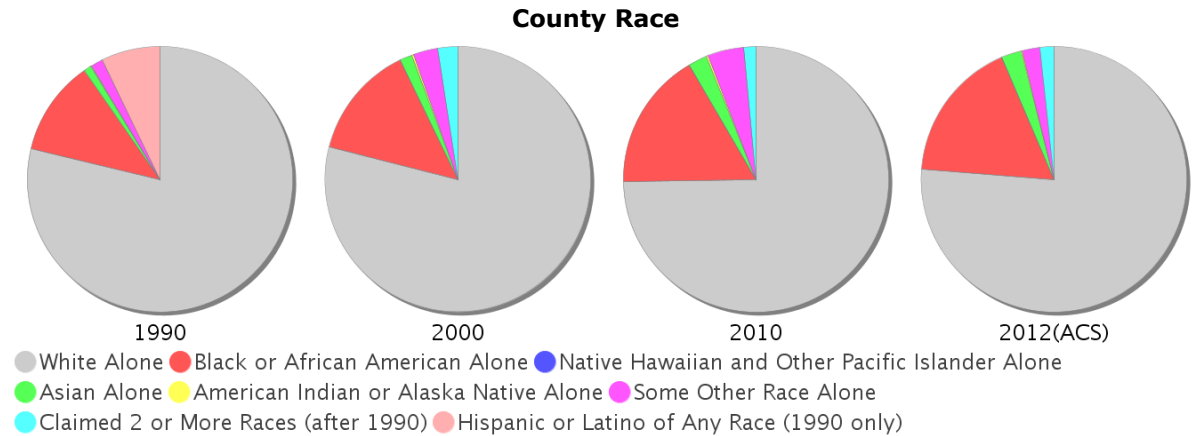
General Population Trends - Palm Beach

Description	1990	2000	2010	2012(ACS)
Total Population	863,518	1,131,184	1,299,356	1,324,085
Total Households	365,558	474,175	523,150	523,891
Average Persons per Acre	0.608	0.797	0.917	0.934
Average Persons per Household	2.362	2.344	2.00	2.49
Average Persons per Family	2.874	2.966	3.158	3.233
Males	414,538	545,705	629,214	641,215
Females	448,980	585,479	670,142	682,870



Race and Ethnicity Trends - Palm Beach

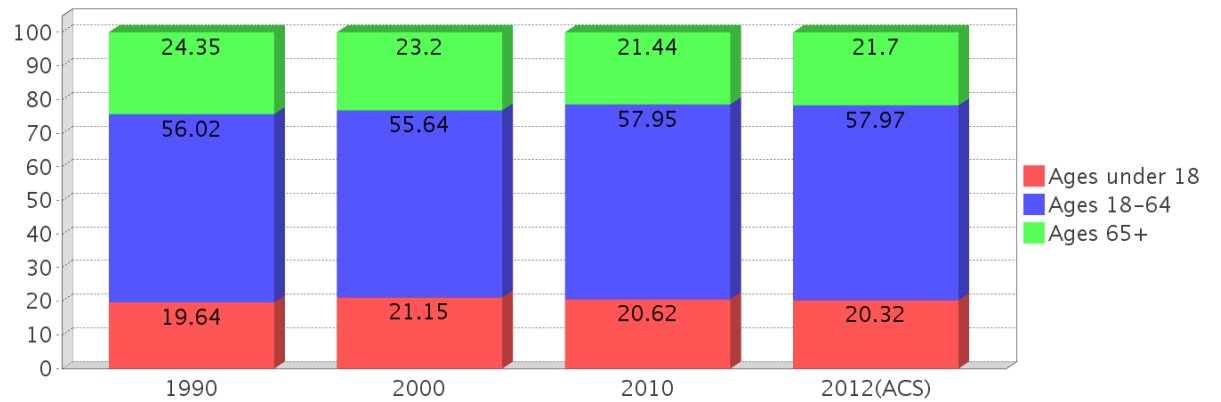
Description	1990	2000	2010	2012(ACS)
White Alone	732,231 (84.80%)	893,242 (78.97%)	971,148 (74.74%)	1,009,367 (76.23%)
Black or African American Alone	107,705 (12.47%)	156,496 (13.83%)	218,649 (16.83%)	229,313 (17.32%)
Native Hawaiian and Other Pacific Islander Alone	(NA)	423 (0.04%)	674 (0.05%)	636 (0.05%)
Asian Alone	8,808 (1.02%)	16,895 (1.49%)	29,536 (2.27%)	31,527 (2.38%)
American Indian or Alaska Native Alone	1,211 (0.14%)	2,706 (0.24%)	2,772 (0.21%)	2,436 (0.18%)
Some Other Race Alone	13,351 (1.55%)	33,904 (3.00%)	57,740 (4.44%)	28,128 (2.12%)
Claimed 2 or More Races	(NA)	27,518 (2.43%)	18,837 (1.45%)	22,678 (1.71%)
Hispanic or Latino of Any Race	66,613 (7.71%)	140,568 (12.43%)	233,557 (17.97%)	252,510 (19.07%)
Not Hispanic or Latino	796,905 (92.29%)	990,616 (87.57%)	1,065,799 (82.03%)	1,071,575 (80.93%)
Non White Alone	131,287 (15.20%)	237,942 (21.03%)	328,208 (25.26%)	314,718 (23.77%)



Age Trends - Palm Beach

Description	1990	2000	2010	2012(ACS)
Under Age 5	6.16%	5.47%	5.45%	5.33%
Ages 5-17	13.47%	15.68%	15.17%	14.99%
Ages 18-21	4.12%	3.87%	4.67%	4.82%
Ages 22-29	11.02%	7.98%	8.71%	8.87%
Ages 30-39	15.44%	14.10%	11.76%	11.42%
Ages 40-49	11.46%	14.35%	14.24%	13.74%
Ages 50-64	13.98%	15.34%	18.57%	19.12%
Age 65 and Over	24.35%	23.20%	21.44%	21.70%
-Ages 65-74	13.47%	10.90%	9.57%	9.94%
-Ages 75-84	8.74%	9.19%	8.32%	7.93%
-Age 85 and Over	2.13%	3.11%	3.55%	3.84%
Median Age	NA	42	43	44

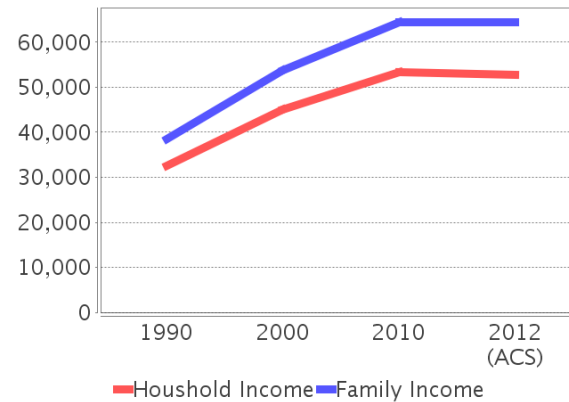
Percentage Population by Age Group



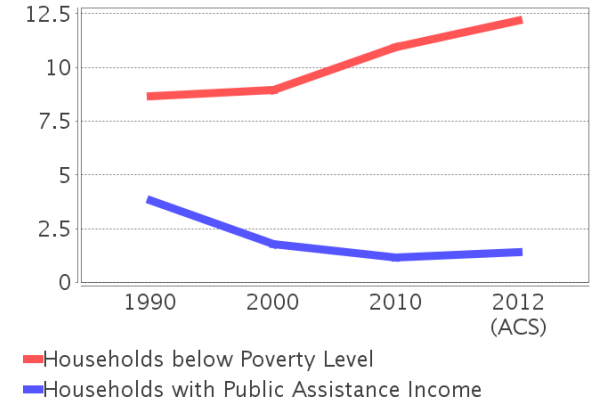
Income Trends - Palm Beach

Description	1990	2000	2010	2012(ACS)
Median Household Income	\$32,524	\$45,062	\$53,242	\$52,806
Median Family Income	\$38,539	\$53,701	\$64,445	\$64,367
Population below Poverty Level				
Households below Poverty Level	8.65%	8.96%	10.93%	12.18%
Households with Public Assistance Income	3.79%	1.79%	1.17%	1.40%

Income Trends



Poverty and Public Assistance



Disability Trends - Palm Beach

Age 16 to 64

Description	1990	2000	2010	2012(ACS)
Population 16 To 64 Years with a disability	34,925 (4.98%)	127,364 (12.05%)	NA (NA)	57,718 (7.21%)

Educational Attainment Trends - Palm Beach

Age 25 and Over

Description	1990	2000	2010	2012(ACS)
Less than 9th Grade	47,090	44,985	53,438	56,085
9th to 12th Grade, No Diploma	86,989	89,361	68,923	64,969
High School Graduate or Higher	497,999	683,553	807,233	827,528
Bachelor's Degree or Higher	139,863	226,615	295,333	308,655

Language Trends - Palm Beach

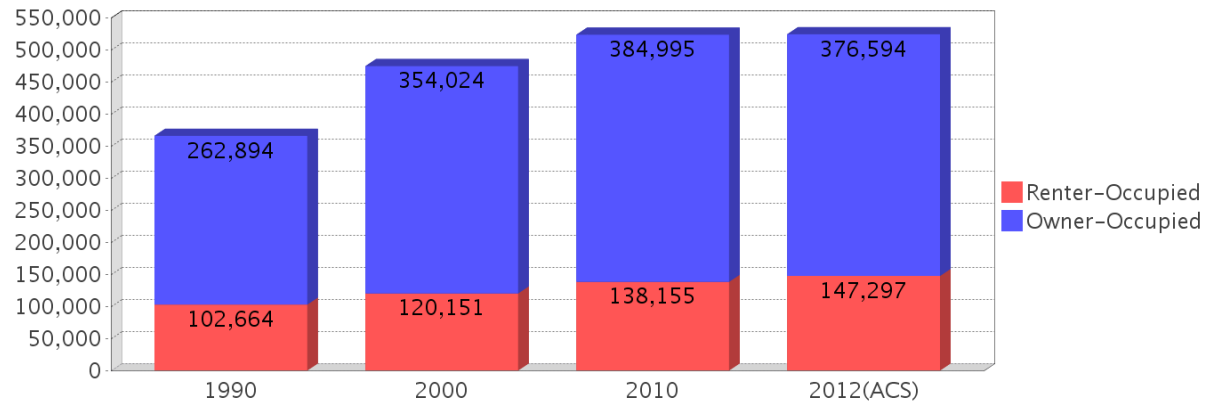
Age 5 and Over

Description	1990	2000	2010	2012(ACS)
Speaks English Well	28,086	51,028	81,271	81,920
Speaks English Not Well	NA	37,764	53,656	56,928
Speaks English Not at All	NA	15,032	24,485	24,817
Speaks English Not Well or Not at All	23,068	52,796	78,141	81,745

Housing Trends - Palm Beach

Description	1990	2000	2010	2012(ACS)
Total	461,665	556,428	657,106	663,599
Units per Acre	0.325	0.392	0.464	0.468
Single-Family Units	198,763	307,104	367,698	375,061
Multi-Family Units	147,309	228,687	269,970	269,951
Mobile Home Units	15,917	20,083	19,071	18,331
Owner-Occupied Units	262,894	354,024	384,995	376,594
Renter-Occupied Units	102,664	120,151	138,155	147,297
Vacant Units	96,107	82,253	133,956	139,708
Median Housing Value	\$98,100	\$115,000	\$261,900	\$216,200
Occupied Housing Units w/No Vehicle	29,875 (8.17%)	37,659 (7.94%)	32,330 (6.18%)	33,358 (6.37%)

Housing Tenure



County Data Sources

Demographic data reported is from the U.S. Decennial Census (1990, 2000, and 2010) and the American Community Survey (ACS) 5-year estimates from 2006-2010 and 2008-2012. The data was gathered at the county level. Depending on the dataset, the data represents 100% counts (Census Summary File 1) or sample-based information (Census Summary File 3 or ACS).

About the Census Data:

Use caution when comparing the 100% count data (Decennial Census) to the sample-based data (ACS). In any given year, about one in 40 or 2.5% of U.S. households will receive the ACS questionnaire. Over any five-year period, about one in eight households will receive the questionnaire, as compared to about one in six that received the long form questionnaire for the Decennial Census 2000. (Source: <http://mcdc.missouri.edu/pub/data/acs/Readme.shtml>) The U.S. Census Bureau provides help with this process:

http://www.census.gov/acs/www/guidance_for_data_users/comparing_2012/

Use caution when interpreting changes in Race and Ethnicity over time. In the 2000 Decennial Census, respondents were given a new option of selecting one or more race categories. Also in 2000, information on Hispanic origin was collected independent of race. Because of these changes, the 2000 data and later datasets are not directly comparable with race related data from the 1990 or earlier censuses. (Source: <http://www.census.gov/prod/2001pubs/c2kbr01-1.pdf>)

Disability data is not included in the 2010 Decennial Census, or the 2006-2010 ACS. This data is available in the 2008-2012 ACS.

According to the US Census Bureau, disability variables should not be compared between 1990, 2000, or 2012 ACS data. Because of the changes to the questions, the new ACS disability questions should not be compared to the previous ACS disability data or the Census 2000 disability data. Furthermore, the 2000 disability questions changed significantly from the 1990 questions and data from these surveys also should not be compared.

Please take the following two concerns into account when viewing this data: 1) With the 1990 data the disabilities are listed as a "work disability" while this distinction is not made with 2000 or 2012 ACS data; 2) The 2012 ACS data includes the institutionalized population (e.g. persons in prisons and group homes), while this population is not included in 1990 or 2000.

source:

<https://www.census.gov/people/disability/methodology/acs.html>

<https://www.census.gov/population/www/cen2000/90vs00/index.html>

The category Bachelor's Degree or Higher under the heading Educational Attainment Trends is a subset of the category High School Graduate or Higher.

Metadata

- Community and Fraternal Centers https://etdmpub.florida-estat.org/metadata/gc_communitycenter.htm
- Correctional Facilities in Florida https://etdmpub.florida-estat.org/metadata/gc_correctional.htm
- Cultural Centers in Florida https://etdmpub.florida-estat.org/metadata/gc_culturecenter.htm
- Fire Department and Rescue Station Facilities in Florida https://etdmpub.florida-estat.org/metadata/gc_firestat.htm
- Local, State, and Federal Government Buildings in Florida https://etdmpub.florida-estat.org/metadata/gc_govbuild.htm
- Florida Health Care Facilities https://etdmpub.florida-estat.org/metadata/gc_health.htm
- Hospital Facilities in Florida https://etdmpub.florida-estat.org/metadata/gc_hospitals.htm
- Law Enforcement Facilities in Florida https://etdmpub.florida-estat.org/metadata/gc_lawenforce.htm
- Florida Parks and Recreational Facilities https://etdmpub.florida-estat.org/metadata/gc_parks.htm
- Religious Centers https://etdmpub.florida-estat.org/metadata/gc_religion.htm
- Florida Public and Private Schools https://etdmpub.florida-estat.org/metadata/gc_schools.htm

- Social Service Centers https://etdmpub.florida-etat.org/metadata/gc_socialservice.htm
- Assisted Rental Housing Units in Florida https://etdmpub.florida-etat.org/metadata/gc_assisted_housing.htm
- Group Care Facilities <https://etdmpub.florida-etat.org/metadata/groupcare.htm>
- Mobile Home Parks in Florida https://etdmpub.florida-etat.org/metadata/gc_mobilehomes.htm
- Migrant Camps in Florida <https://etdmpub.florida-etat.org/metadata/migrant.htm>
- Generalized Land Use - Florida DOT District 4 https://etdmpub.florida-etat.org/metadata/d4_lu_gen.htm
- Census Block Groups in Florida https://etdmpub.florida-etat.org/metadata/e2_cenacs_cci.htm
- 1990 Census Block Groups in Florida https://etdmpub.florida-etat.org/metadata/e2_cenblkgrp_1990_cci.htm
- 2000 Census Block Groups in Florida https://etdmpub.florida-etat.org/metadata/e2_cenblkgrp_2000_cci.htm
- 2010 Census Block Groups in Florida https://etdmpub.florida-etat.org/metadata/e2_cenblkgrp_2010_cci.htm